

MPB WARM UP

Steve Sanchez

SPIDER EXERCISE

1 ♩ = 84

Musical notation for the Spider Exercise, measures 1-8 and 9-16. The exercise is in 4/4 time with a tempo of 84 beats per minute. It features a sequence of eighth notes and quarter notes, often grouped with slurs and ties, creating a 'spider' pattern. The key signature has one sharp (F#).

BD LIP SLUR EXERCISES

Musical notation for BD Lip Slur Exercises, measures 17-23 and 24-31. This section consists of two lines of music, each containing four measures. The exercises involve slurs over eighth and sixteenth notes, with various accidentals (sharps and naturals) to challenge lip control and intonation.

BD LIP SLUR EXERCISES CONT'D

Musical notation for BD Lip Slur Exercises Cont'd, measures 32-39, 40-47, 48-55, and 56-63. This section continues with more complex lip slur exercises, including slurs over eighth and sixteenth notes with various accidentals. The exercises are designed to improve lip flexibility and endurance.

4

CLARKE STUDIES #1

Musical staff 1 for Clarke Studies #1, measures 1-68. The staff is in treble clef with a key signature of one sharp (F#). It contains a continuous sequence of eighth-note chords, primarily triads and dyads, moving in a stepwise fashion across the staff.

Musical staff 2 for Clarke Studies #1, measures 69-75. Continuation of the eighth-note chordal sequence from the previous staff.

Musical staff 3 for Clarke Studies #1, measures 76-82. Continuation of the eighth-note chordal sequence.

Musical staff 4 for Clarke Studies #1, measures 83-88. The sequence concludes with a final chord and a double bar line with repeat slashes (//).

5

CLARKE STUDIES #2

Musical staff 1 for Clarke Studies #2, measures 1-92. The staff is in treble clef with a key signature of one sharp (F#). It contains a continuous sequence of eighth-note chords, primarily triads and dyads, moving in a stepwise fashion across the staff.

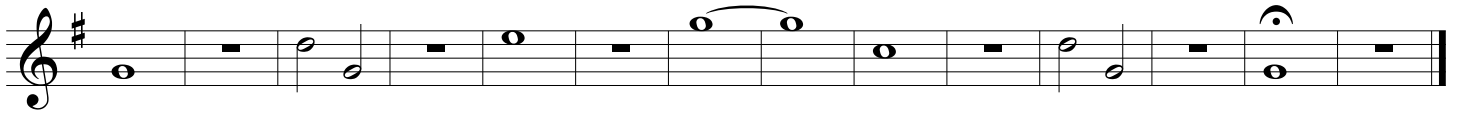
Musical staff 2 for Clarke Studies #2, measures 93-99. Continuation of the eighth-note chordal sequence.

Musical staff 3 for Clarke Studies #2, measures 100-106. Continuation of the eighth-note chordal sequence.

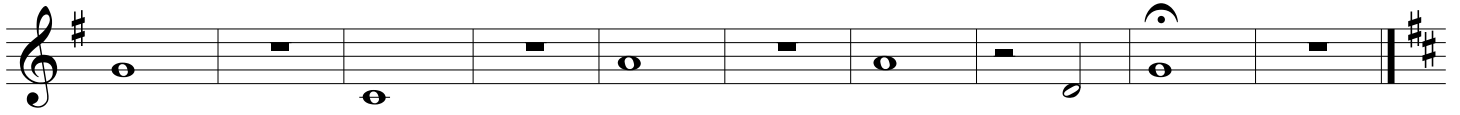
Musical staff 4 for Clarke Studies #2, measures 107-111. The sequence concludes with a final chord and a double bar line.

Musical staff 5 for Clarke Studies #2, measures 112-118. The staff is empty, indicating the end of the piece.

6 TUNING EXERCISE



7 BALANCE EXERCISE



8 CHORALE

